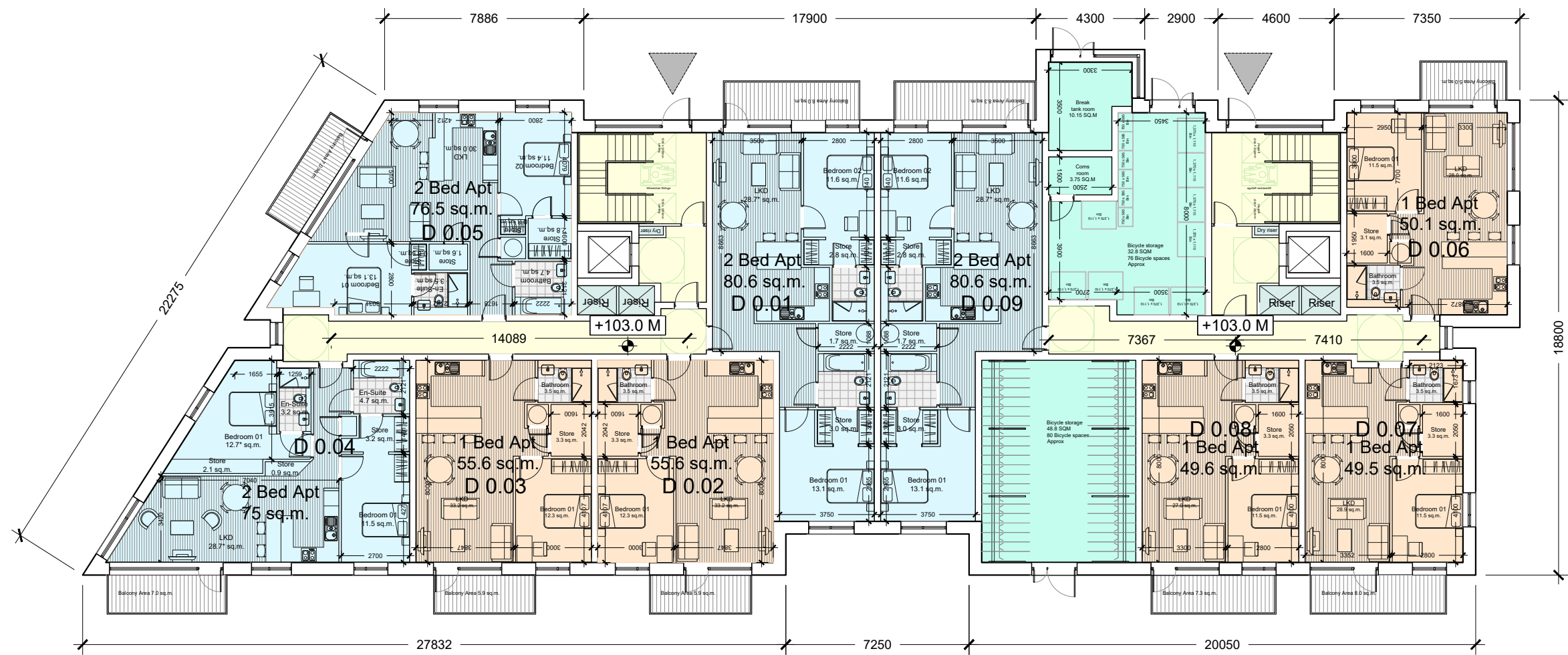


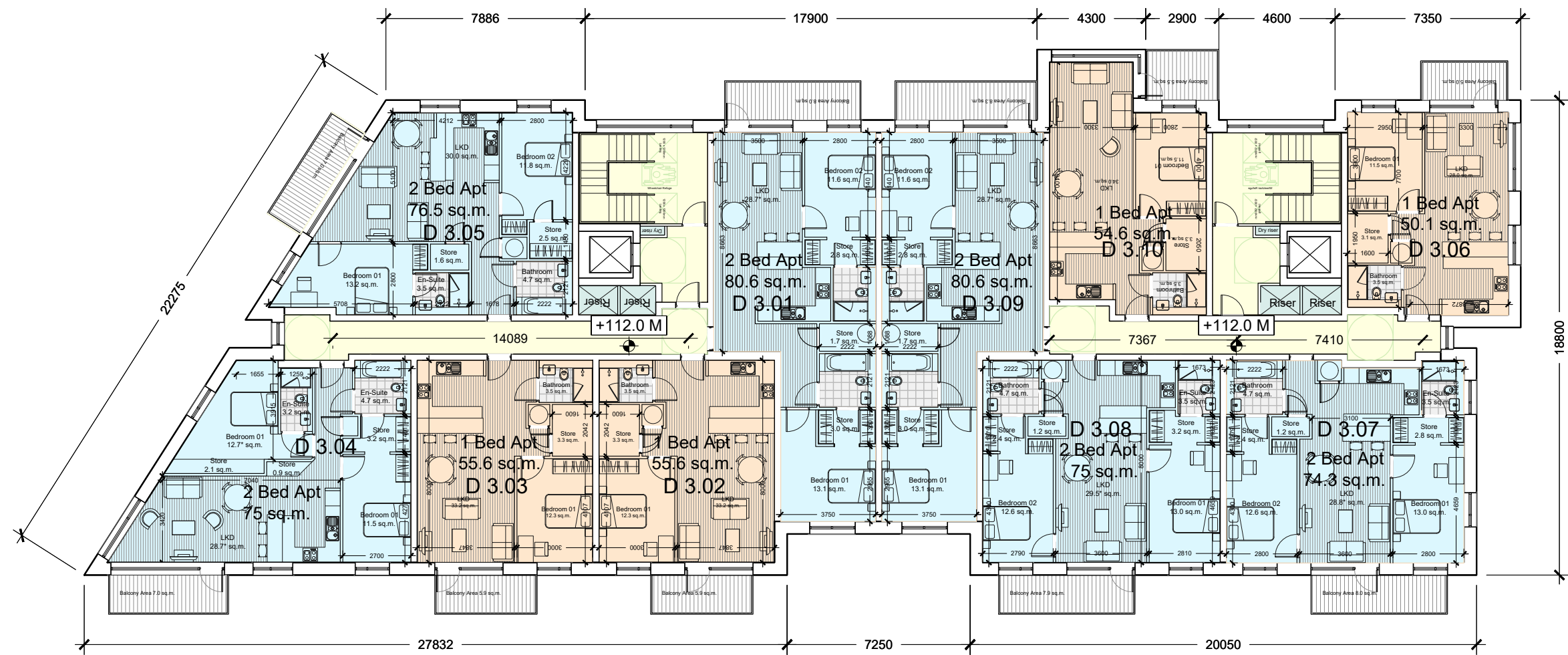


- GENERAL NOTES
1. COPYRIGHT RESERVED
 2. DO NOT SCALE DRAWING. USE FIGURED DIMENSIONS ONLY.
 3. ALL DISCREPANCIES TO BE REPORTED TO ARCHITECT
 4. THE CONTRACTOR IS RESPONSIBLE FOR CHECKING ALL LEVELS AND DIMENSIONS.
 5. ALL STRUCTURE TO BE TO STRUCTURAL ENGINEERS DETAILS.
 6. ALL MECH & ELIC SERVICES TO SERVICES ENGINEERS DETAILS.
 7. ALL PROPRIETARY ITEMS TO BE INSTALLED IN ACCORDANCE WITH MANUFACTURERS INSTRUCTIONS.
 8. CONTRACTOR IS RESPONSIBLE FOR THE COORDINATION OF STRUCTURE FINISHES AND SERVICES.

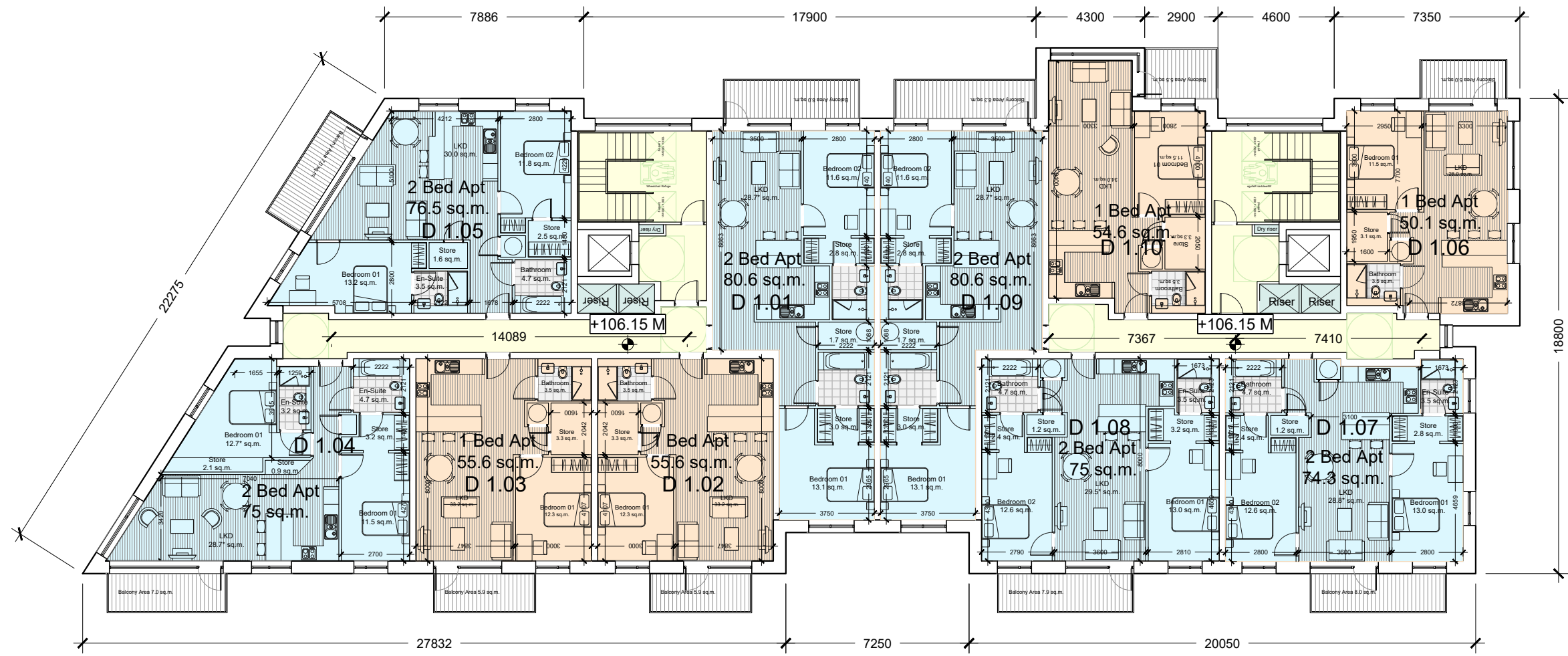
REV	DATE	DESCRIPTION	BY



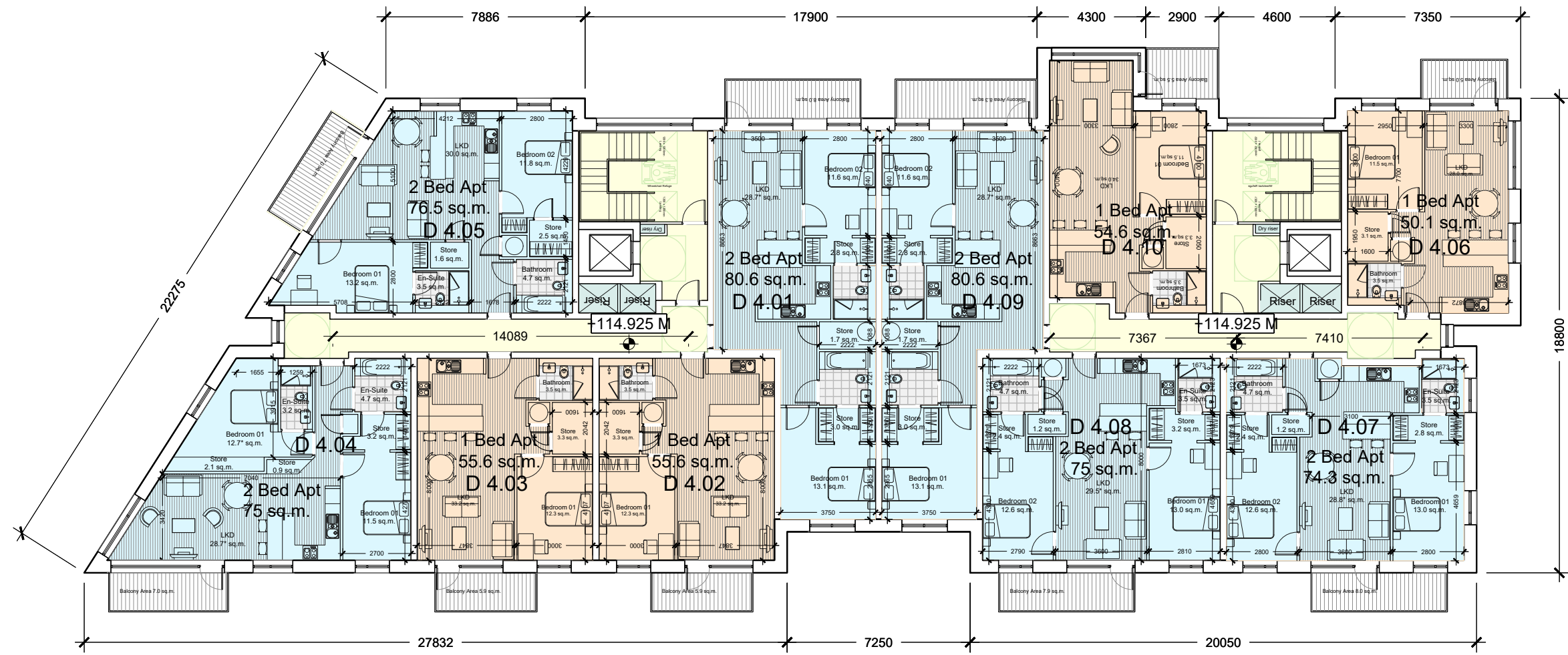
Block D_Ground floor plan
Scale 1:200 @ A1



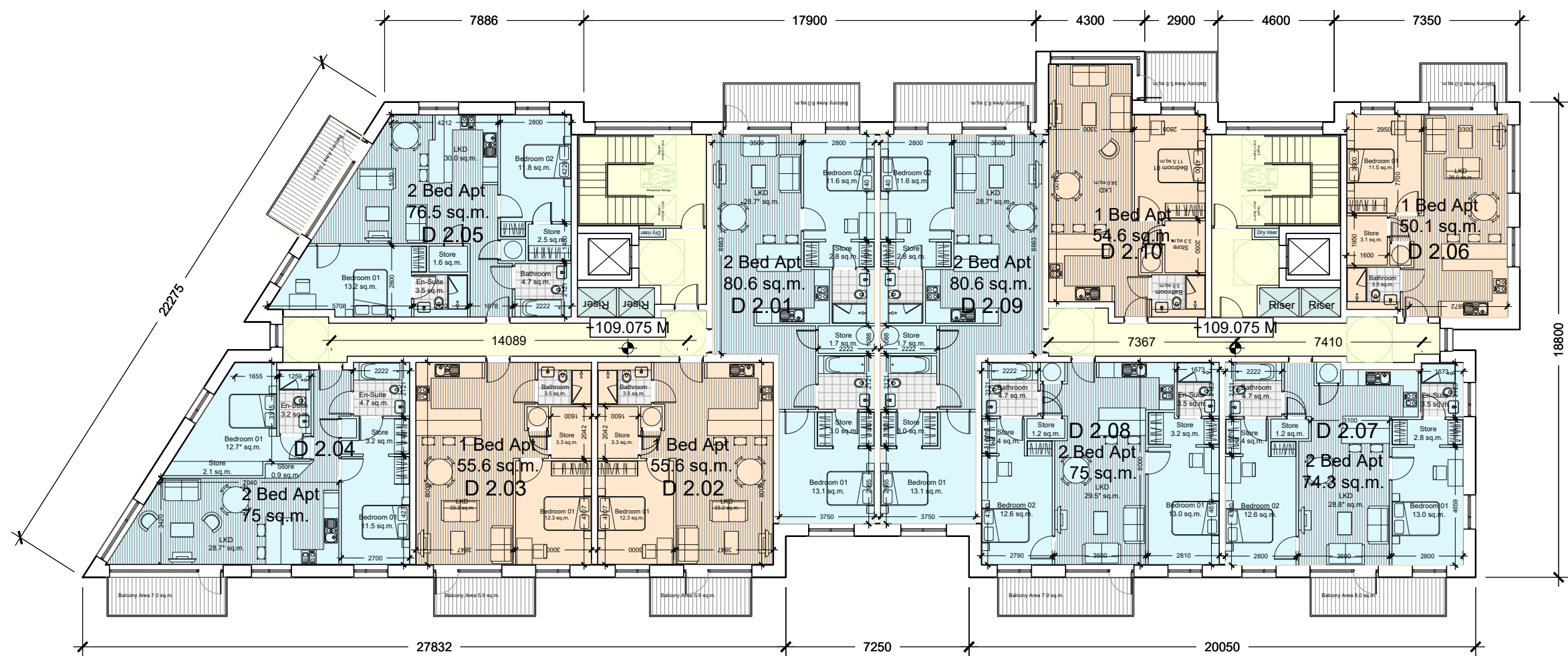
Block D_Third floor plan
Scale 1:200 @ A1



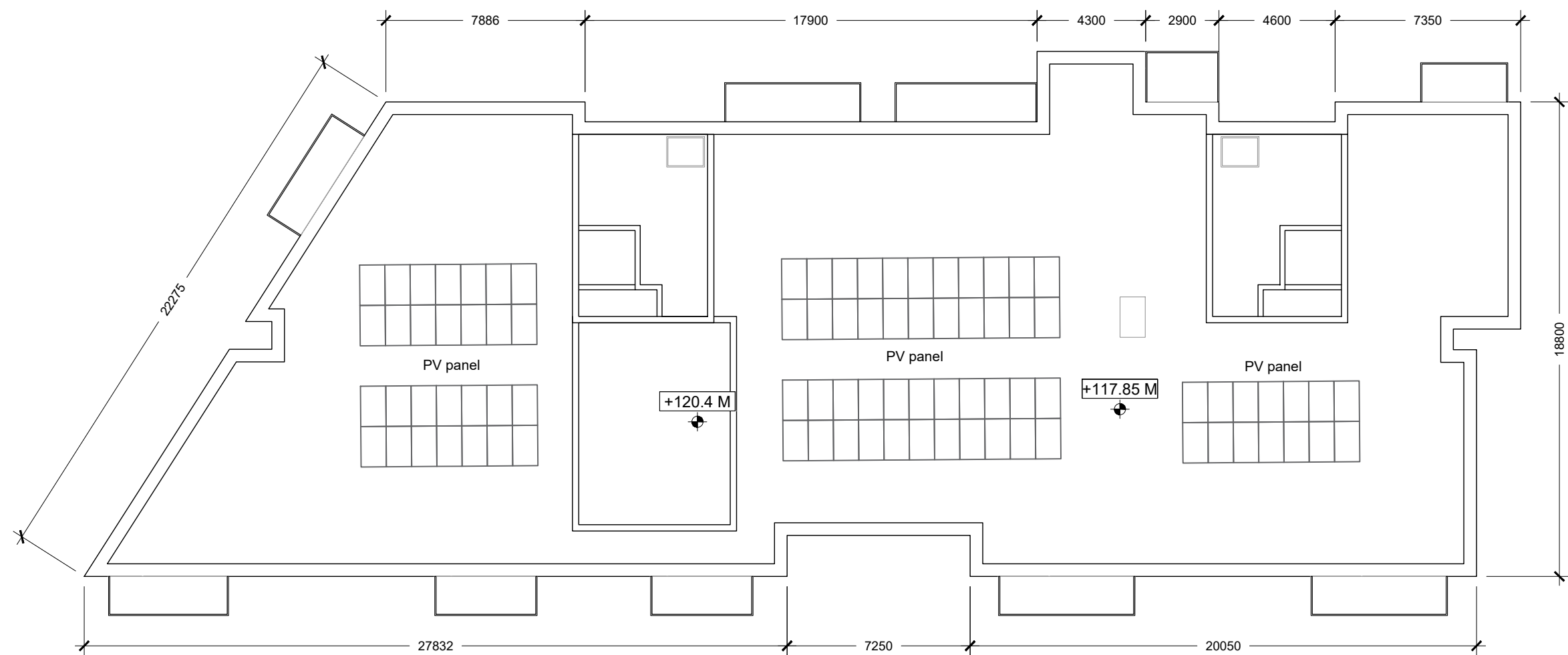
Block D_First floor plan
Scale 1:200 @ A1



Block D_Fourth floor plan
Scale 1:200 @ A1

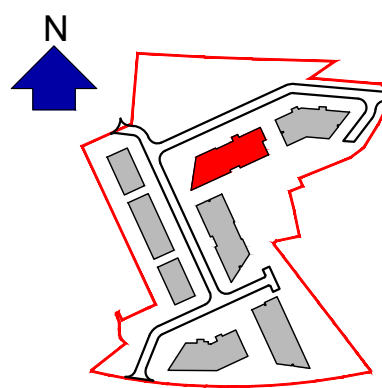


Block D_Second floor plan
Scale 1:200 @ A1



Block D_Roof plan
Scale 1:200 @ A1

- One bed apartment
- Two bed 4 person apartment
- Circulation
- Storage & Services
- Community space (Block A)
- Amenity area (Block C)



Keyplan



**JOHN FLEMING
ARCHITECTS**

The Tree House
17 Richview Office Park, DUBLIN 14.
T: (01) 6689888 E: info@jfa.ie W: www.jfa.ie

CLIENT
Ardstone Homes Ltd.

PROJECT
White Pines East SHD
Stocking Ave

DRAWING
Apartment Block D
Floor plans (ALL)

SCALE
1:200@A1
JOB NO.
1941
DRAWN BY
OC-EH
DATE
March 2021
DRAWING NUMBER
WPE-JFA-XX-AD-DR-A-P2004
REVISION

DRAWING LOCATION
\\109.john1616103-planning\3.1-planning-application\3.1.2-and-block-6

DRAWING STATUS
Planning

